

XPose! FlexLine

The Revolution in Digital Flexo Plate Making



BASED ON INNOVATION.

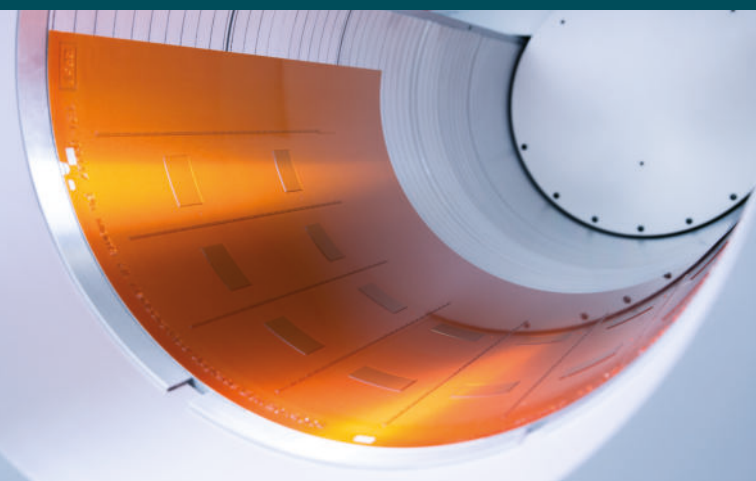
luscher
Technologies

Advantages of the Patented Lüscher Laser Diode Technology

- PROVEN AND TRUSTED TECHNOLOGY MADE IN SWITZERLAND
- MAINTENANCE-FREE FIBRE OPTIC COUPLED LASER DIODE TECHNOLOGY
- FULLY AUTOMATIC CALIBRATION OF LASER DIODES
- ULTRA-LONG LIFESPAN OF THE LASER DIODES WITH +15'000 IMAGING HOURS
- UPGRADEABLE – ADDITIONAL LASER DIODES CAN BE ADDED AT ANYTIME FOR FASTER IMAGING SPEED
- HIGH-ENERGY LASER DIODES FOR HIGHEST ENERGY OUTPUT, NO ACTIVE COOLING SYSTEM REQUIRED
- NO CONSUMABLES
- OPERATES VIRTUALLY MAINTENANCE-FREE
- LOW ENERGY CONSUMPTION, LOWEST COST OF OWNERSHIP

Advantages of the XPose! Flex^{Line}

- OUTSTANDING QUALITY UP TO 20'320 DPI WITH XPOSE! FLEX^{LINE} HIRES^{PLUS}
- UP TO 5 DESIRED RESOLUTION INLCUDED WITH THE FLEXTREME! OPITC
- NO LOSS OF SPEED WITH ANY PLATE THICKNESS UP TO 6.35 MM
- EASY LOADING AND UNLOADING
- NOT DEPENDING ON PARTICULAR FORMATS
- ALSO SUITABLE FOR LETTERPRESS / DRY OFFSET PLATES
- X!MASK SOFTWARE FOR SURFACE SCREENING



Technical Specifications of the XPose! Flex^{Line}

Machine Type	Maximum Plate Size	Maximum Plate Thickness	Machine Dimensions (L x W x H)	Weight
XPose! Flex ^{Line} 330	1'200 x 950 mm (47.24 x 37.4 inch)	6.35 mm (0.25 inch)	2'940 x 1'367 x 1'645 mm (115.7 x 53.8 x 64.8 inch)	1'900 kgs (4'189 lbs)
XPose! Flex ^{Line} 330L	1'067 x 1'524 mm (42 x 60 inch)	6.35 mm (0.25 inch)	3'406 x 1'367 x 1'640 mm (135 x 53.9 x 64.6 inch)	2'400 kgs (5'291 lbs)
XPose! Flex ^{Line} 360L	1'270 x 2'032 mm (50 x 80 inch)	6.35 mm (0.25 inch)	4'672 x 1'565 x 1'899 mm (183.9 x 61.6 x 74.8 inch)	3'800 kgs (8'378 lbs)

General Information of the XPose! Flex^{Line}

Feature	Flex ^{Line}	Flex ^{Line} HiRes ^{Plus}
Resolution	2'000 / 2'540 / 4'000 / 5'080 / 8'000 dpi	9'600 up to 20'320 dpi
Laser diode types	TH, 980 nm	TH, 975 nm
Number of laser diodes	16 / 32 / 48 / 64	16 / 32 / 48 / 64 / 96 / 128
Power supply	3 x 400 V + N + PE / 50 – 60 Hz / 32 A	
Air supply	6 – 10 bar, 300 l/min	
Power consumption	2 kW / 2.5 kW	
Ambient conditions	40 – 65% humidity at 18 – 25°C (64.4 – 77 ° F)	
Room conditions	vibration-free floor	

New Standard in Flexo Plate Making

XPose! Flex^{Line}

The XPose! Flex^{Line} guarantees highest performance up to 10m²/h and maximum flexibility.

Full HD Flexo including 5 different resolutions

The fleXtreme! optic is an in-house development by Lüscher. With a simple click of the button you can switch between 5 different resolutions (2'000 / 2'540 / 4'000 / 5'080 / 8'000 dpi) according to your needs in terms of quality and performance.

Optional X!Mask Software for Surface Patering

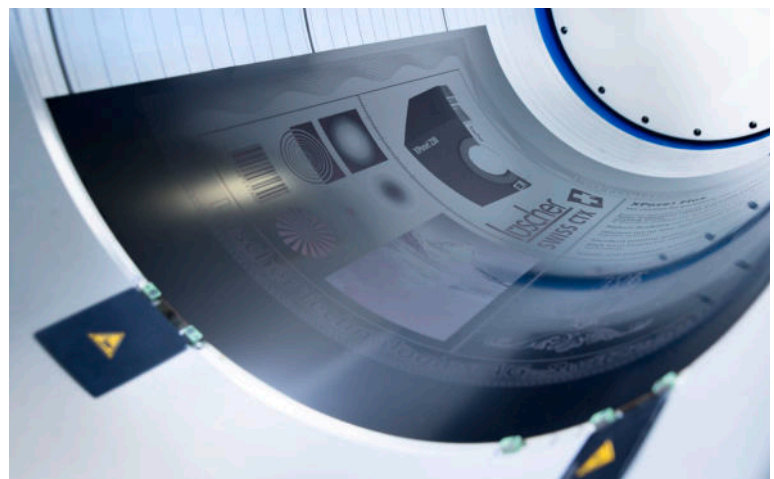
The X!Mask Software developed by Lüscher Technologies AG automatically recognizes surfaces or small dots or lines. It fully automatically generates structures or microcells on the surfaces and thus allows higher density values in solid areas. The operator is free to configure both shape and size of the microcells. Highlight dots as well as fine lines can be identified by the software and are automatically assigned broad shoulders. The software is independent of the RIP and runs fully automatically on the output computer.

XPose! Flex^{Line} HiRes^{Plus}

With the XPose! Flex^{Line} HiRes^{Plus} you can achieve the best quality with the highest possible resolution of 20'320 dpi that the market offers today. The fleXtreme! optic is an in-house development by Lüscher. With a simple click of the button you can switch between different resolutions (9'600 / 20'320 dpi) according to your needs in terms of quality and performance.

Including X!Mask Software for Surface Patering for outstanding Quality

The X!Mask Software developed by Lüscher Technologies AG automatically recognizes surfaces or small dots or lines. It fully automatically generates structures or microcells on the surfaces and thus allows higher density values in solid areas. The operator is free to configure both shape and size of the microcells. Highlight dots as well as fine lines can be identified by the software and are automatically assigned broad shoulders. The software is independent of the RIP and runs fully automatically on the output computer.



Lüscher Laser Diode Technology

The fibre-coupled laser diodes operate in the 975–980 nm range and are characterised by an ultra-long service life of +15'000 exposing hours. They are completely maintenance-free, no need for active cooling system.

Fully Automatic and Continuous Calibration

XPose! FlexLine includes the unique Continuous Calibration Technology (CCT). During the exposure, the performance of every laser is monitored and automatically adjusted if necessary. Costly inappropriate exposures can thus be eliminated.

Lowest Energy Consumption

Lüscher's patented laser diode technology ensures minimal power usage of 2 kW / 2.5 kW, reducing costs and providing lower cost of ownership. This promotes environmentally-friendly production for customers.

Easiest Plate Handling

The unique patented combination of inside and outside drum technology allows easy and quick operating. There is no need for tension rails or time-consuming taping of the plates onto the drum, since the plates in any size or thickness are static. Even printing plates of 50 x 80 inch can easily be loaded or unloaded by the operator.



Lüschner Technologies AG

Industriestrasse 17
4665 Oftringen
Switzerland
Telephone +41 62 767 76 76
contact@luescher.com
www.luescher.com



A HELIOGRAPH HOLDING COMPANY