

XPose! FlexLine

The Revolution in Digital Flexo Plate Making



BASED ON INNOVATION.

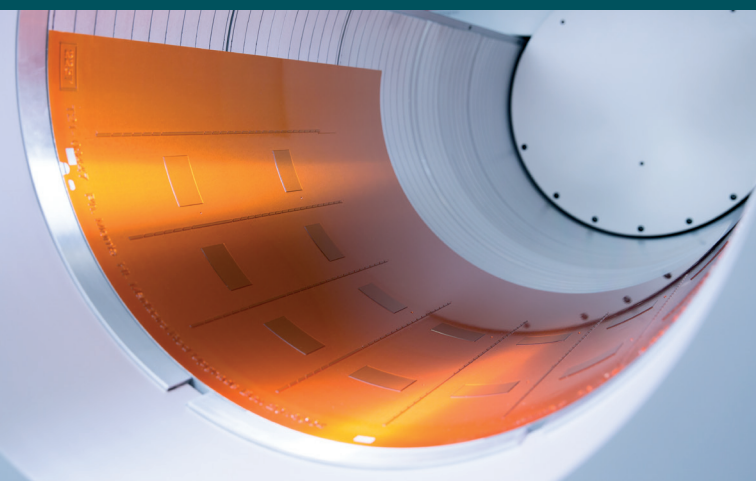
luscher
Technologies

Advantages of the Patented Lüscher Laser Diode Technology

- PROVEN AND TRUSTED TECHNOLOGY MADE IN SWITZERLAND
- MAINTENANCE-FREE FIBRE OPTIC COUPLED LASER DIODE TECHNOLOGY
- FULLY AUTOMATIC CALIBRATION OF LASER DIODES
- ULTRA-LONG LIFESPAN OF THE LASER DIODES WITH +15'000 IMAGING HOURS
- UPGRADEABLE – ADDITIONAL LASER DIODES CAN BE ADDED AT ANYTIME FOR FASTER IMAGING SPEED
- HIGH-ENERGY LASER DIODES FOR HIGHEST ENERGY OUTPUT, NO ACTIVE COOLING SYSTEM REQUIRED
- NO CONSUMABLES
- OPERATES VIRTUALLY MAINTENANCE-FREE
- LOW ENERGY CONSUMPTION, LOWEST COST OF OWNERSHIP

Advantages of the XPose! Flex^{Line}

- OPTIONAL FLEXTREME! OPTIC FOR MULTIPLE RESOLUTIONS UP TO 5'080 DPI
- NO LOSS OF SPEED WITH ANY PLATE THICKNESS UP TO 6.35 MM
- EASY LOADING AND UNLOADING
- NOT DEPENDING ON PARTICULAR FORMATS
- ALSO SUITABLE FOR LETTERPRESS / DRY OFFSET PLATES
- FULL HD FLEXO INCLUDED
- X!MASK SOFTWARE FOR SURFACE SCREENING



Technical Specifications of the XPose! Flex^{Line}

Machine Type	Maximum Plate Size	Maximum Plate Thickness	Machine Dimensions (L x W x H)	Weight
XPose! Flex ^{Line} 330	1'200 x 950 mm (47.24 x 37.4 inch)	6.35 mm (0.25 inch)	2'940 x 1'367 x 1'645 mm (115.7 x 53.8 x 64.8 inch)	1'900 kgs (4'189 lbs)
XPose! Flex ^{Line} 330L	1'067 x 1'524 mm (42 x 60 inch)	6.35 mm (0.25 inch)	3'406 x 1'367 x 1'640 mm (135 x 53.9 x 64.6 inch)	2'400 kgs (5'291 lbs)
XPose! Flex ^{Line} 360L	1'270 x 2'032 mm (50 x 80 inch)	6.35 mm (0.25 inch)	4'607 x 1'585 x 1'899 mm (183.9 x 61.6 x 74.8 inch)	3'800 kgs (8'378 lbs)

General Information of the XPose! Flex^{Line}

Feature	Specification
Resolution	2'540 / 5'080 dpi
Laser diode types	TH, 980 nm
Number of laser diodes	16 / 32 / 48 / 64
Power supply	3 x 400 V + N + PE / 50 – 60 Hz / 32 A
Air supply	6 – 10 bar, 300 l/min
Power consumption	2 kW / 2.5 kW
Ambient conditions	50 – 65% humidity at 18 – 25°C (64.4 – 77 ° F)
Room conditions	vibration-free floor

New Standard in Flexo Plate Making

Lüscher Laser Diode Technology

The fibre-coupled laser diodes operate in the 980 nm range and are characterised by an ultra-long service life of +15'000 exposing hours. They are completely maintenance-free, no need for active cooling system.

Fully Automatic and Continuous Calibration

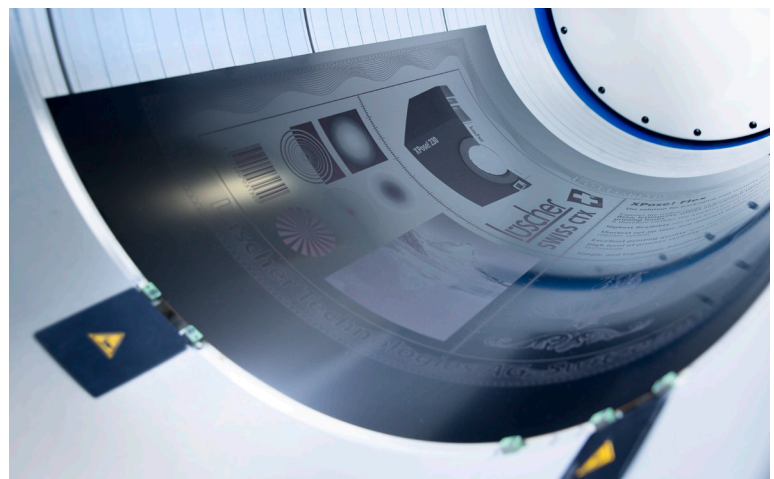
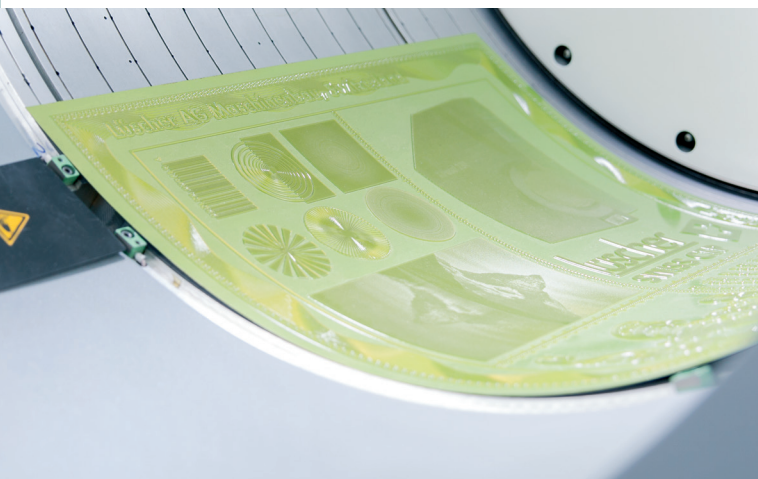
XPose! Flex^{Line} includes the unique Continuous Calibration Technology (CCT). During the exposure, the performance of every laser is monitored and automatically adjusted if necessary. Costly inappropriate exposures can thus be eliminated.

Lowest Energy Consumption

Lüscher's patented laser diode technology ensures minimal power usage of 2 kW / 2.5 kW, reducing costs and providing lower cost of ownership. This promotes environmentally-friendly production for customers.

flexTreme! Optic for Multiple Resolution

The optional flexTreme! optic is an in-house development by Lüscher and allows the selection of any desired resolution. The changeover is fully automatic and tailored to requirements. This means that every job could be exposed in any resolution.



Full HD Flexo Included

The standard equipment includes a dual optic system. XPose! Flex^{Line} enables the user to make exposures in full HD with 5'080 dpi or with standard resolution 2'540 dpi by a simple click of a button – XPose! Flex^{Line} makes things easy for you. Other resolutions are available upon special request, i.e. 2'400/4'800 dpi as dual optic or 4'000 dpi as single optic are optionally available without extra charge.

X!Mask for Outstanding Quality

The X!Mask Software developed by Lüscher Technologies AG automatically recognizes surfaces or small dots or lines. It fully automatically generates structures or microcells on the surfaces and thus allows higher density values in solid areas. The operator is free to configure both shape and size of the microcells. Highlight dots as well as fine lines can be identified by the software and are automatically assigned broad shoulders. The software is independent of the RIP and runs fully automatically on the output computer.

Easiest Plate Handling

The unique patented combination of inside and outside drum technology allows easy and quick operating. There is no need for tension rails or time-consuming taping of the plates onto the drum, since the plates in any size or thickness are static. Even printing plates of 50 x 80 inch can easily be loaded or unloaded by the operator.



Lüschner Technologies AG

Industriestrasse 17
4665 Oftringen
Switzerland
Telephone +41 62 767 76 76
contact@luescher.com
www.luescher.com



A HELIOGRAPH HOLDING COMPANY