

X!Log Software

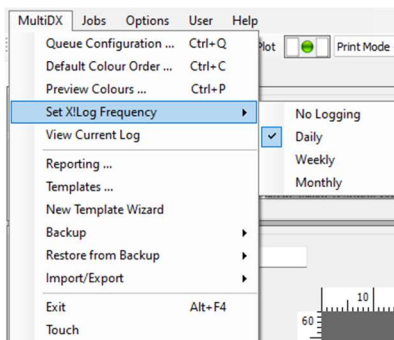
For connection to MIS

Purpose

To provide the company with information so that statistics and analyses can be created. The data can easily be read out with an MIS system or Excel. X!Log is the ideal complement to meet Industry 4.0 requirements.

Main functions

Depending on the settings, the log files are created daily, weekly or monthly.



Every exposure is traced with its date, time and information about the files and system settings. It also shows who started the exposure, how long the exposure lasted, and if an error was triggered.

A screenshot of a printed log file window titled '02-27-Printed.txt'. The window displays a table with columns for 'Datei', 'Bearbeiten', 'Ansicht', and a list of exposure data. The data includes fields like 'Datei', 'Status', 'Date', 'Time', 'Duration', 'Single', 'Template', 'MediaSize', 'MediaType', 'PlateID', 'File', and 'User'.

Datei	Bearbeiten	Ansicht	
785	Printed	28.03.2023	09:32 Duration Single Template MediaSize MediaType PlateID C:\ProgramData\Luscher\Testfiles\FileA-2540dpi.TIF userName
786	F123:4567 Error	28.03.2023	09:45 Duration Single Template MediaSize MediaType PlateID C:\ProgramData\Luscher\Testfiles\FileB-2540dpi.TIF userName
786	Printed	28.03.2023	10:02 Duration Single Template MediaSize MediaType PlateID C:\ProgramData\Luscher\Testfiles\FileB-2540dpi.TIF userName
787	Printed	28.03.2023	10:16 Duration Single Template MediaSize MediaType PlateID C:\ProgramData\Luscher\Testfiles\FileC-2540dpi.TIF userName

Main benefits

- Traceability of all exposures.
- Evaluations, calculations and statistics in Excel are all possible.
- Can be easily read into the MIS system.