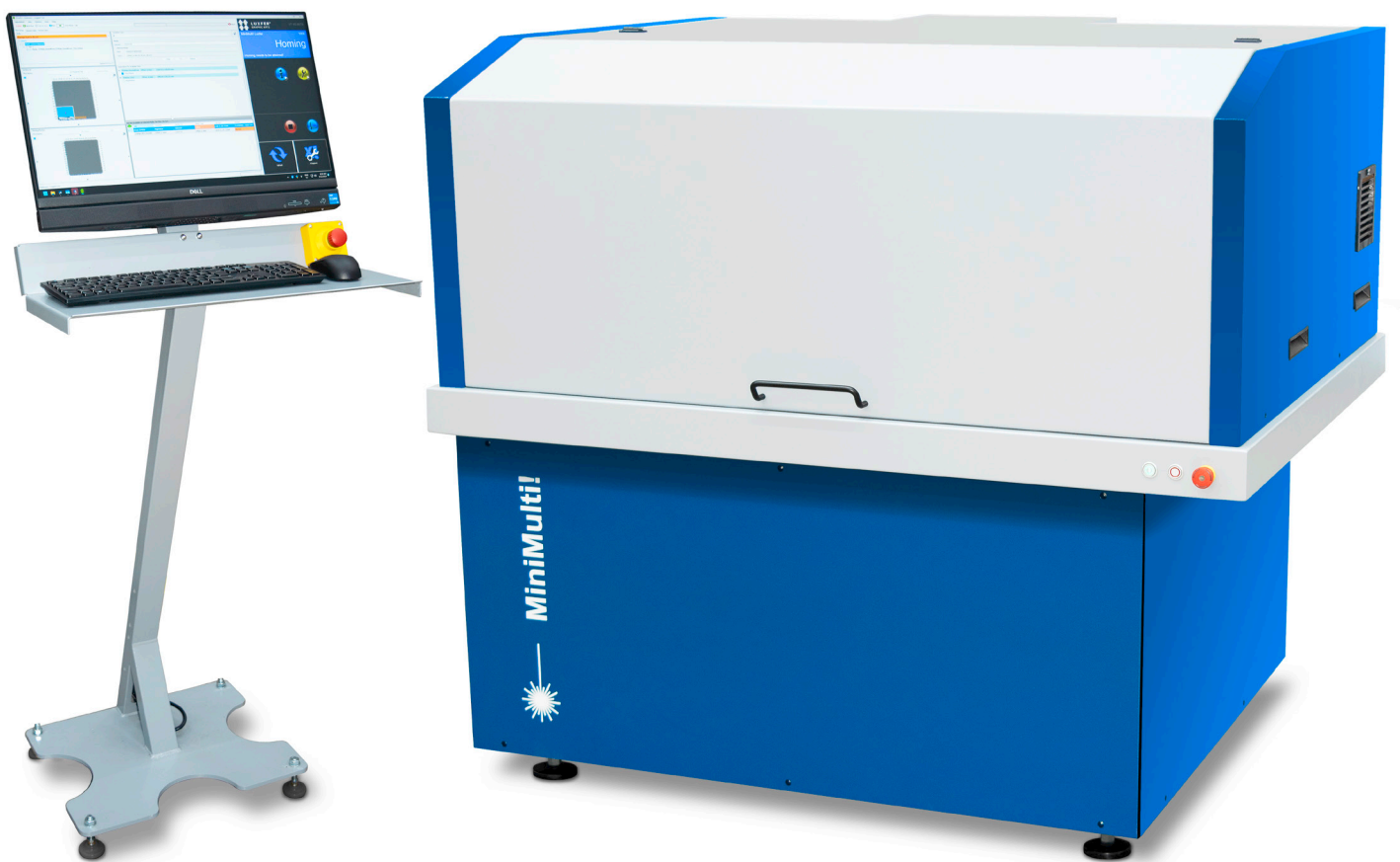


MiniMulti!

CtS & CtP System Tailored to Your Application



BASED ON INNOVATION.

luscher
Technologies

Advantages of the Unique Lüscher Laser Diode Technology

- PROVEN AND PATENTED TECHNOLOGY MADE IN SWITZERLAND
- MAINTENANCE-FREE FIBRE COUPLED LASER DIODE TECHNOLOGY
- FULLY AUTOMATIC CALIBRATION OF LASER DIODES PRIOR TO EVERY IMAGING CYCLE
- ULTRA-LONG LIFETIME OF THE LASER DIODES WITH +20'000 IMAGING HOURS
- POSSIBLE TO UPGRADE WITH ADDITIONAL LASER DIODES AT ANYTIME FOR FASTER IMAGING SPEED
- HIGHEST ENERGY OUTPUT DUE TO HI-ENERGY LASER DIODES
- NO ACTIVE COOLING SYSTEM REQUIRED
- NO CONSUMABLES
- OPERATES NEARLY MAINTENANCE-FREE
- LOW ENERGY CONSUMPTION, LOWEST COST OF OWNERSHIP

Advantages of the MiniMulti!

- FLATBED SYSTEM FOR EASIEST HANDLING
- IMAGING AREA UP TO 662 X 530 MM
- CUSTOMIZED TO YOUR APPLICATION, SUCH AS FLEXO, LETTERPRESS, FLAT SCREEN, ROTARY SCREEN, PAD PRINTING OR EMBOSSED
- CUSTOM-BUILT REGISTERING SYSTEM
- OPTIMAL PRICE-PERFORMANCE RATIO

Left image: Embossing Cliche | Right image: Rotary Screen



Technical Specifications of the MiniMulti!

MiniMulti! Flexo

Laser type	TH, 980 nm
Number of laser diodes	16, 32
Resolutions	2'540 & 5'080 dpi

MiniMulti! Letterpress

Laser type	TH, 980 nm
Number of laser diodes	16, 32
Resolutions	2'540 & 5'080 dpi

MiniMulti! Flat Screen

Laser type	UV, 405 nm
Number of laser diodes	16, 32
Resolution	2'540 or 2'540 & 5'080 dpi (optional)

MiniMulti! Rotary Screen

Laser type	UV, 405 nm
Number of laser diodes	16, 32
Resolution	2'540 dpi

MiniMulti! Pad Printing

Laser type	TH, 980 nm or UV 405 nm
Number of laser diodes	16, 32
Resolutions	2'540 & 5'080 dpi

MiniMulti! Embossing

Laser type	UV, 405 nm
Number of laser diodes	16, 32
Resolutions	2'540 dpi

General Information

Maximum imaging area (W x D) – Plate size	662 x 530 mm (26.1 x 20.9 inch)
Maximum outside format of screen frame (W x D)	760 x 870 mm (29.9 x 34.3 inch)
Dimensions (L x W x H)	1'435 x 1'325 x 1'300 mm (56.5 x 52.2 x 51.2 inch)
Weight	500 kgs (1'102 lbs)
Power supply	230 V / 50 – 60 Hz / 16 A
Power consumption	ca. 0.4 / 0.7 kW with extraction system
Ambient conditions	40 – 65% humidity at 18 – 25° C (64.4 – 77° F)
Room conditions	vibration-free floor

Flatbed Computer-to-Screen (CtS) or Computer-to-Plate (CtP) System

Unique Imaging System Tailored to Your Application

Depending on machine configuration, the MiniMulti! can image printing forms such as flexo plates, letterpress plates, pad printing plates, embossing clichés, flat screens as well as rotary screens, such as Screeny® by Gallus, TecScreen® by Kocher + Beck or RotaPlate® by spg.

Lüscher Laser Diode Technology

The fibre-coupled laser diodes operates in different wavelengths and are characterized by an ultra-long service life of +20'000 imaging hours. They are completely maintenance-free, no need for an active cooling system.

Fully Automatic Calibration

Prior to every imaging, the system checks the default laser diodes settings relating to the material to be imaged and automatically calibrates the laser diode if necessary. This guarantees consistent quality and eliminates imaging errors.

Nearly Maintenance-free

MiniMulti! does not require any consumables such as MH lamps / UV lamps / LED's or DMD chip. Lüscher maintenance software guides the operator through the simple maintenance tasks and guarantees high reliability. MiniMulti! is equipped with a port for Remote Support Service, which can be directly linked to our technical support via internet.

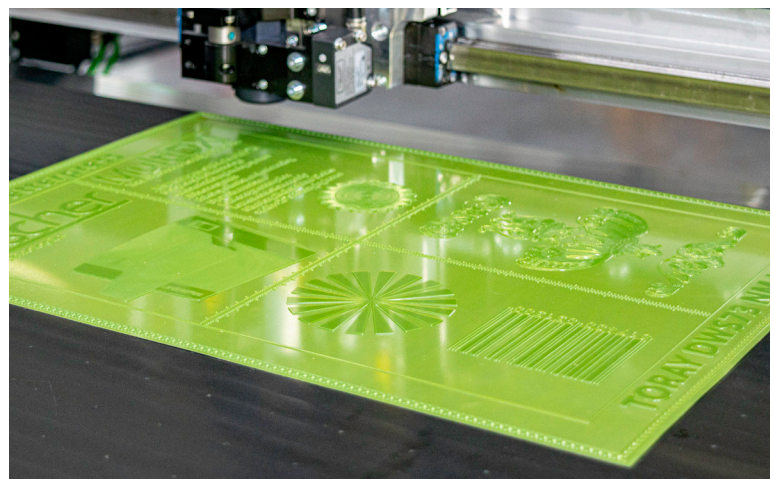
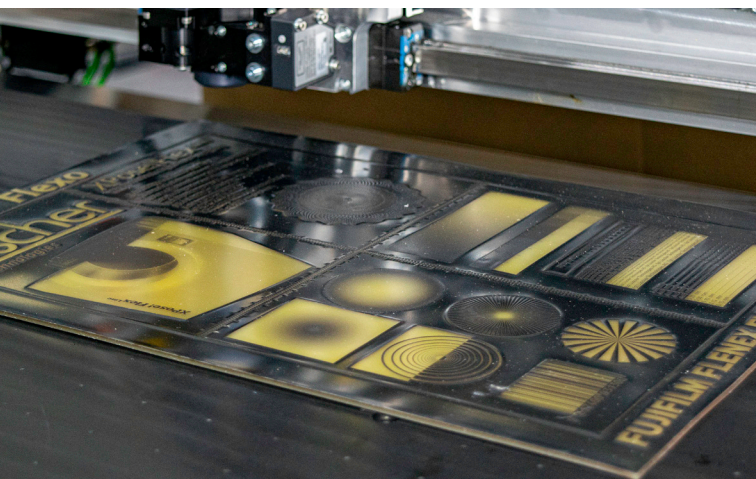
Lowest Energy Consumption

Lüscher's unique laser diode technology guarantees extremely low power consumption of 0.05 – 0.7 kW, depending on laser diodes and lowest cost of ownership. This helps the customer to achieve environmental-friendly production.

Custom-built Registering System

The flatbed layout of MiniMulti! allows the integration of custom-built registering systems for perfect alignment of the image on the printing form. As a result, the setup time in the printing press is substantially reduced, which leads to significant savings in terms of material and cost.

Left image: Flexo Printing Plate | Right image: Letterpress Printing Plate



Applications

Flexo

The MiniMulti! Flexo is a compact imaging system for the label and narrow web printers using a plate size of 635 x 508 mm (25 x 20 inch). MiniMulti! Flexo comes with two different resolutions, 2'540 dpi as well as full HD 5'080 dpi.

Letterpress

The MiniMulti! Letterpress is a compact imaging system for the label and dry-offset printers using a max. plate size of 650 x 530 mm (25.6 x 20.9 inch). The flatbed layout allows the integration of custom-built registering systems for perfect registration and multiple exposures simultaneously.

Embossing Cliches

The MiniMulti! Embossing is a compact imaging system for exposing Photo Engraving Plates used for Foiling, Embossing, Micro Etch etc. All common Magnesium, Copper and Zinc plates with Photoresist up to the size of 650 x 500 mm (26 x 20 inch), can easily be exposed. MiniMulti! Embossing comes with 2'540 dpi resolution to make sure that the plates are always imaged in the highest quality.

Flat Screen Printing

The MiniMulti! Flat Screen is a compact imaging system for screens up to 760 x 870 mm (29.9 x 34.3 inch). Any common steel or polyester mesh can be processed, and the system has enough power capacity to cure thick emulsion layers and capillary films. Custom-made vacuum tables and register systems for any screen size is available. MiniMulti! Flat Screen comes as standard with 2'540 dpi resolution and for higher demands, optional with 2'540 dpi & 5080 dpi resolutions. This allows you to always get the best quality and performance ratio.

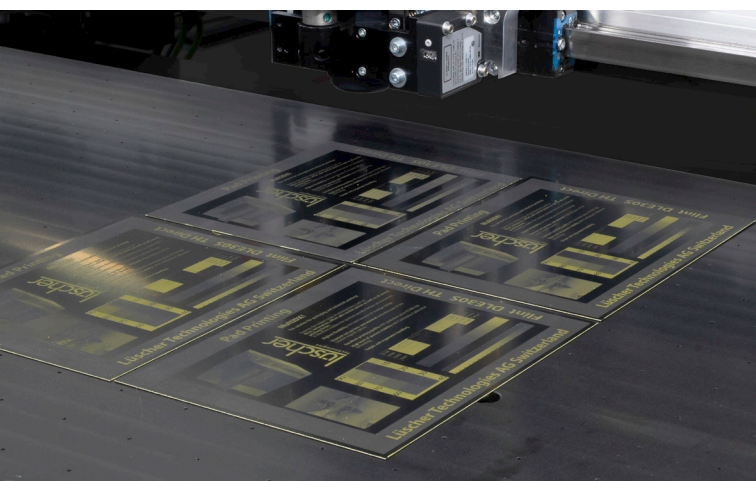
Rotary Screen Printing

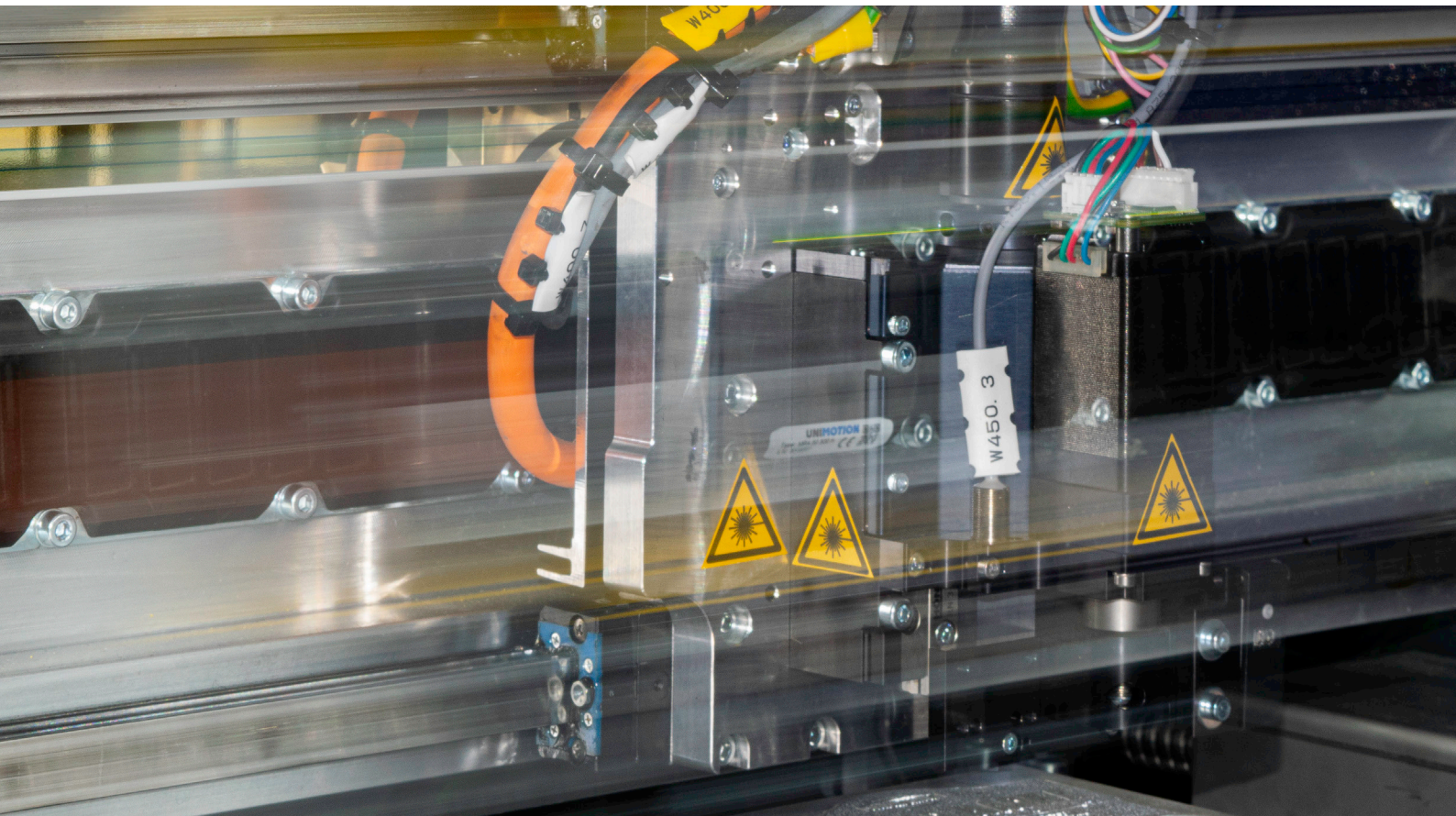
The MiniMulti! Rotary Screen is a compact imaging system for rotary screens up to 662 x 530 mm (26.1 x 20.9 inch). Rotary screens, such as Screeny® by Gallus, TecScreen® by Kocher + Beck or RotaPlate® by spg are perfectly registered on the special vacuum table during exposure.

Pad Printing

The MiniMulti! Pad Printing is a compact imaging system for a plate size up to 662 x 530 mm (26.1 x 20.9 inch). The flatbed table layout allows the integration of custom-built registering systems for perfect registration and multiple exposures simultaneously. Depending on machine configuration, the MiniMulti! Pad Printing can image Direct Engravable pad printing plates as well as Digital Polymer plates or Steel clichés. MiniMulti! Pad Printing comes with two different resolutions, 2'540 dpi as well as full HD 5'080 dpi.

Left image: Pad Printing Plate | Right image: Flat Screen





Lüschert Technologies AG

Industriestrasse 17
4665 Oftringen
Switzerland
Telephone +41 62 767 76 76
contact@luescher.com
www.luescher.com

A HELIOGRAPH HOLDING COMPANY