

# JetScreen! LT round

Direct Imaging System for Rotary Screens



BASED ON INNOVATION.

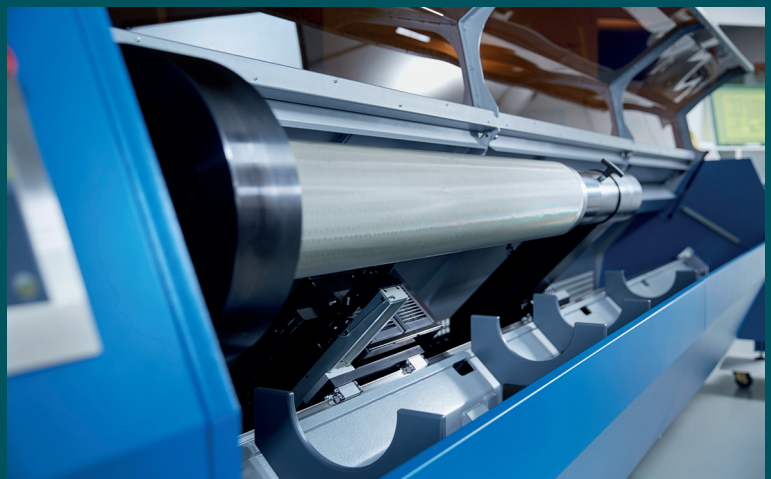
**Lüscher**  
Technologies

# Advantages of the Patented Lüscher Laser Diode Technology

- PROVEN AND TRUSTED TECHNOLOGY MADE IN SWITZERLAND
- MAINTENANCE-FREE FIBER-OPTIC COUPLED LASER DIODE TECHNOLOGY
- FULLY AUTOMATIC CALIBRATION OF LASER DIODES
- ULTRA-LONG LIFESPAN OF THE LASER DIODES WITH +20'000 IMAGING HOURS
- UPGRADEABLE- ADDITIONAL LASER DIODES CAN BE ADDED AT ANY TIME FOR FASTER IMAGING SPEED
- HIGH-ENERGY LASER DIODES FOR MAXIMUM ENERGY OUTPUT, NO ACTIVE COOLING SYSTEM REQUIRED
- NO CONSUMABLES
- OPERATES VIRTUALLY MAINTENANCE-FREE
- LOW ENERGY CONSUMPTION, LOWEST COST OF OWNERSHIP

# Advantages of the JetScreen! LT round

- ALL STANDARD REPEATS AVAILABLE
- SCREEN IMAGING POSSIBLE IN LESS THAN 5 MINUTES
- RESOLUTION OF 1'200 DPI OR 2'400 DPI
- MODULAR DESIGN



# Technical Specifications of the JetScreen! LT round

MachineType	Max. Screen Length	Machine Dimensions (L x W x H)	Weight
JetScreen! LT round 22	2'200 mm (86.6 inch)	3'980 x 1'110 x 1'280 / 2'000 mm (156.7 x 43.7 x 50.4 / 78.7 inch)	2'000 kg (4'409 lb)
JetScreen! LT round 35	3'500 mm (137.8 inch)	5'370 x 1'110 x 1'280 / 2'000 mm (211.4 x 43.7 x 50.4 / 78.7 inch)	2'200 kg (4'850 lb)

# General Information of the JetScreen! LT round

Feature	Specification
Repeats	640 / 725 / 820 / 914 / 1'018 mm
Resolution	1'200 dpi
Resolution optional	2'400 dpi
LaserType	UV, 405 nm
Number of Laser Diodes	16 / 32
Power Supply	3 x 400V + N + PE / 50 - 60 Hz / 32 A
Air Supply	6 - 10 bar, 150 l/min
Power Consumption	approx. 0.5 kW
Ambient Conditions	40 - 65 % humidity at 18 - 25 °C (64.4 - 77 °F)
Room Conditions	yellow light, vibration-free floor

# Competitive and Economical Direct Imaging System

## **Lüscher's Laser Diode Technology**

The fiber-coupled laser diodes operate in the 405 nm range and are characterized by an ultra-long service life of +20'000 imaging hours. They are completely maintenance-free, with no need for an active cooling system.

## **Fully Automatic Calibration**

Prior to each imaging, the system checks the default settings of the laser diodes in relation to the emulsion to be imaged and automatically checks and calibrates the laser diode if necessary. This guarantees consistent quality and eliminates image errors.

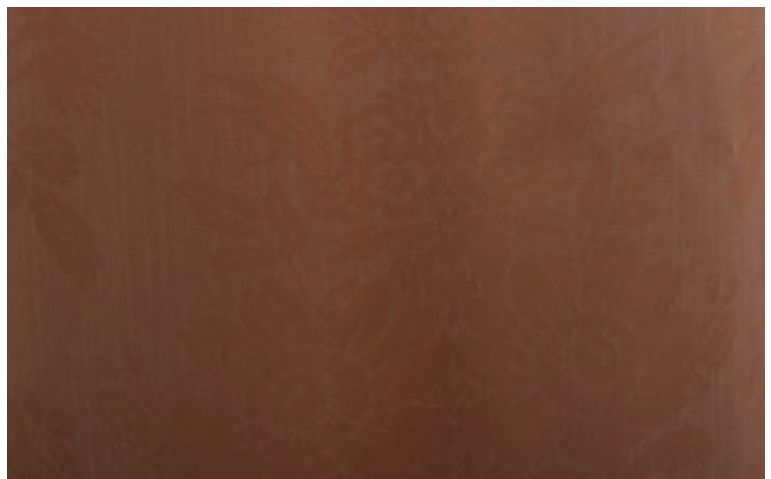
## **Lowest Energy Consumption**

Lüscher's patented laser diode technology ensures minimal power usage of approx. 0.5 kW, reducing costs and providing a lower total cost of ownership. This promotes environmentally friendly production for customers.

## **Virtually Maintenance-free**

JetScreen! LT round does not require any consumables such as MH lamps, UV lamps, LEDs or DMD chips.

Lüscher's maintenance software guides the operator through the simple maintenance tasks and guarantees high reliability. JetScreen! LT round is equipped with a port for Remote Support Service, which can be directly linked to our technical support via the internet.



### **High Performance Reserves**

The laser diodes have high power capacity, allowing their energy to be adapted to the requirements of any emulsion. There is no need for high-speed CtS emulsions; any standard emulsion or thick layer can be imaged and cured by JetScreen! LT round.

### **Modular Design**

The direct imaging system is modular and can be tailored to the requirements and special requests of the customer. The standard configuration includes one 1'200 dpi setting head with 16 individually controllable laser diodes.

### **Screen Imaging in Less Than 5 Minutes**

Depending on the laser diode configuration, JetScreen! LT round images a screen coated with a standard emulsion, a repeat of 640 mm and a length of 2'200 mm in less than 5 minutes.





**Lüschert Technologies AG**

Industriestrasse 17  
4665 Oftringen  
Switzerland

Tel.: +41 62 767 76 76  
contact@luescher.com  
www.luescher.com



A HELIOGRAPH HOLDING COMPANY

