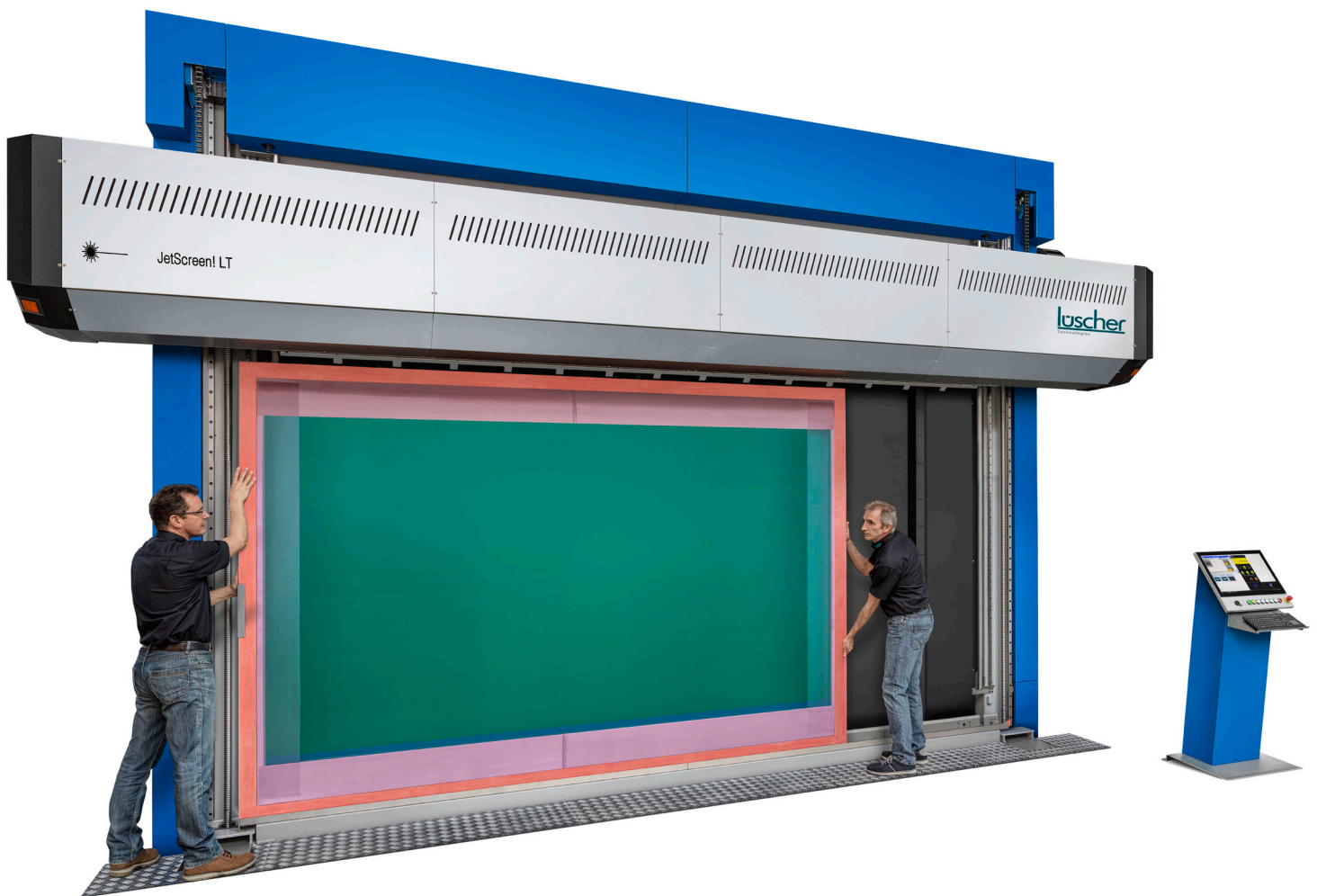


# JetScreen! LT

High Tech Computer-to-Screen System  
with UV Laser Diodes for Large Formats



BASED ON INNOVATION.

**luscher**  
Technologies

# Advantages of the Patented Lüscher Laser Diode Technology

- PROVEN AND TRUSTED TECHNOLOGY MADE IN SWITZERLAND
- MAINTENANCE-FREE FIBER-OPTIC COUPLED LASER DIODE TECHNOLOGY
- FULLY AUTOMATIC CALIBRATION OF LASER DIODES
- ULTRA-LONG LIFESPAN OF THE LASER DIODES WITH +20'000 IMAGING HOURS
- UPGRADEABLE- ADDITIONAL LASER DIODES CAN BE ADDED AT ANY TIME FOR FASTER IMAGING SPEED
- HIGH-ENERGY LASER DIODES FOR MAXIMUM ENERGY OUTPUT, NO ACTIVE COOLING SYSTEM REQUIRED
- NO CONSUMABLES
- OPERATES VIRTUALLY MAINTENANCE-FREE
- LOW ENERGY CONSUMPTION, LOWEST COST OF OWNERSHIP

# Advantages of the JetScreen! LT

- LÜSCHER'S TRIOPTIC! SYSTEM INCLUDES 3 DIFFERENT RESOLUTIONS: 635 / 1'270 / 2'540 DPI
- OPTIONAL RESOLUTION OF 5'080 DPI AVAILABLE
- DYNAMIC AUTOFOCUS
- AUTOMATIC SCREEN FEEDING (OPTIONAL)
- HIGHEST ENERGY OUTPUT ON SCREEN. STANDARD DIAZO-PHOTOPLYMER („DUAL-CURE“) EMULSIONS AND CAPILLARY FILMS CAN EASILY BE IMAGED AND FULLY CURED
- NO CONSUMABLES SUCH AS WAX / INK / MH LAMPS/ UV LAMPS / LEDS OR DMD CHIPS
- INTEGRATION INTO AN AUTOMATIC INLINE SYSTEM POSSIBLE



# Technical Specifications of the JetScreen! LT

MachineType*	Max. Frame Size (L x W)	Max. Imaging Area (L x W)	Machine Dimensions (L x W x H)	Weight
JetScreen! LT 17/15	1'700 x 1'500 mm (66.9 x 59.1 inch)	1'700 x 1'440 mm (66.9 x 56.7 inch)	3'400 x 1'720 x 2'780 mm (133.9 x 67.7 x 109.4 inch)	2'850 kg (6'283 lb)
JetScreen! LT 23/18	2'300 x 1'800 mm (90.6 x 70.9 inch)	2'300 x 1'740 mm (90.6 x 68.5 inch)	4'000 x 1'720 x 3'080 mm (157.5 x 67.7 x 121.3 inch)	3'400 kg (7'495 lb)
JetScreen! LT 31/15	3'100 x 1'500 mm (122.1 x 59.1 inch)	3'100 x 1'440 mm (122.1 x 56.7 inch)	4'800 x 1'715 x 2'775 mm (189.0 x 67.5 x 109.3 inch)	3'500 kg (7'716 lb)
JetScreen! LT 36/22	3'600 x 2'200 mm (141.7 x 86.6 inch)	3'600 x 2'140 mm (141.7 x 84.3 inch)	5'300 x 1'720 x 3'480 mm (208.7 x 67.7 x 137.0 inch)	3'700 kg (8'157 lb)
JetScreen! LT 41/27	4'100 x 2'700 mm (161.4 x 106.3 inch)	4'100 x 2'640 mm (161.4 x 103.9 inch)	6'000 x 1'720 x 3'880 mm (236.2 x 67.7 x 152.8 inch)	4'500 kg (9'920 lb)
JetScreen! LT 47/32	4'700 x 3'200 mm (185.0 x 126.0 inch)	4'700 x 3'140 mm (185.0 x 123.6 inch)	6'400 x 1'720 x 4'480 mm (252.0 x 67.7 x 176.4 inch)	5'300 kg (11'684 lb)
JetScreen! LT 55/32	5'500 x 3'200 mm (216.5 x 126.0 inch)	5'500 x 3'140 mm (216.5 x 123.6 inch)	7'200 x 1'720 x 4'480 mm (283.5 x 67.7 x 176.4 inch)	6'000 kg (13'227 lb)

\*larger formats upon request

# General Information of the JetScreen! LT

Feature	Specification
Min. Frame Size (L x W)	Automatic: 400 x 300 mm (15.7 x 11.8 inch) Manually: 400 x 400 mm (15.7 x 15.7 inch)
Motherframe	Upon request
Integration into an Automatic Inline System	Upon request
Trioptic! Resolution	635 / 1'270 / 2'540 dpi
Resolution optional	5'080 dpi
LaserType	UV, 405 nm
Number of Laser Diodes	64 / 80 / 96 / 112 / 128
Power Supply	3 x 400V + N + PE / 50 - 60 Hz / 32 A
Air Supply	6 - 10 bar, 40 l/min
Power Consumption	approx. 2 kW
Ambient Conditions	40 - 65 % humidity at 18 - 25 °C (64.4 - 77 °F)
Room Conditions	yellow light, vibration-free floor

# High-Performance Equipment Meeting Your Particular Needs

## **Lüscher's Laser Diode Technology**

The fiber-coupled laser diodes operate in the 405 nm range and are characterized by an ultra-long service life of +20'000 imaging hours. They are completely maintenance-free, with no need for an active cooling system.

## **Fully Automatic Calibration**

Prior to each imaging, the system checks the default settings of the laser diodes in relation to the emulsion to be imaged and automatically checks and calibrates the laser diode if necessary. This guarantees consistent quality and eliminates image errors

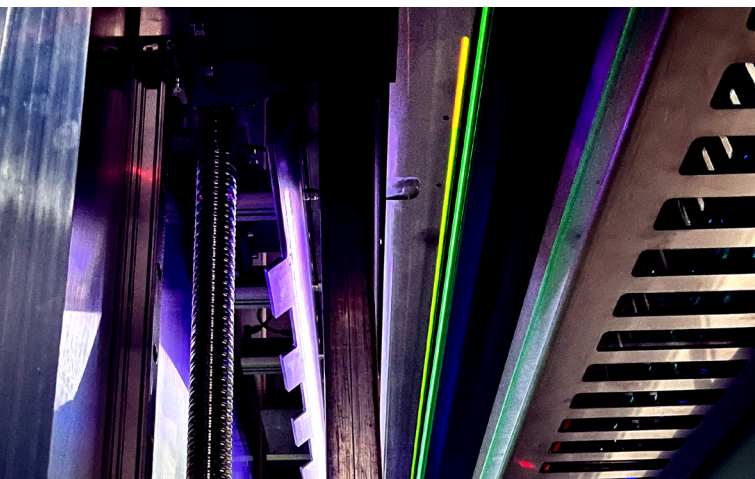
## **Lowest Energy Consumption**

Lüscher's patented laser diode technology ensures minimal power usage of approx. 2 kW, reducing costs and providing a lower total cost of ownership. This promotes environmentally friendly production for customers.

## **Virtually Maintenance-free**

JetScreen! LT does not require any consumables such as Wax, Ink, MH lamps, UV lamps, LEDs or DMD chips.

Lüscher's maintenance software guides the operator through the simple maintenance tasks and guarantees high reliability. JetScreen! LT is equipped with a port for Remote Support Service, which can be directly linked to our technical support via the internet.





## High Performance Reserves

The laser diodes have high power capacity, allowing their energy to be adapted to the requirements of any emulsion. There is no need for high-speed CtS emulsions; any standard emulsion or thick layer can be imaged and cured by JetScreen! LT.

## Lüscher's Trioptic!-System

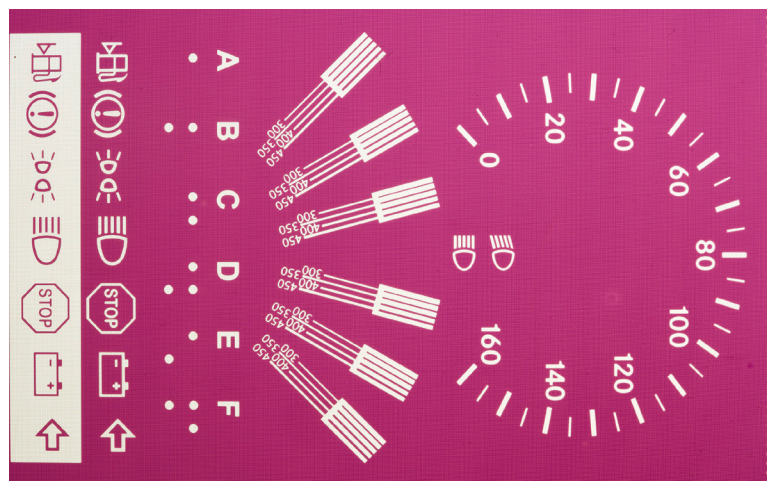
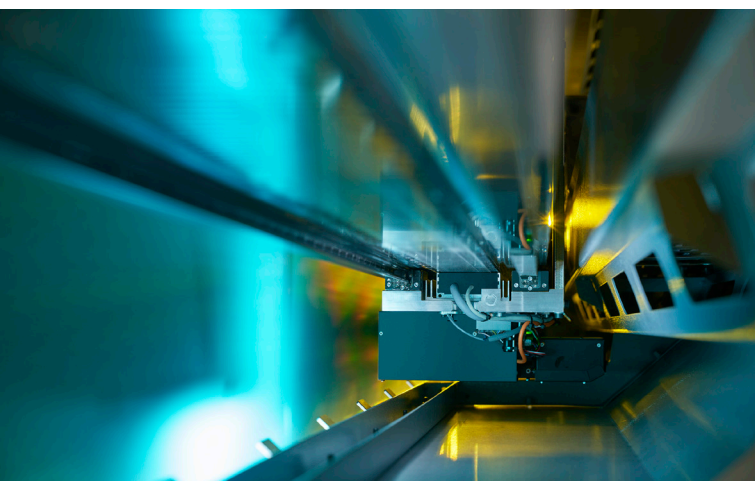
Depending on the specific quality requirements, the desired resolution can be selected at the touch of a button. Whether it's 635, 1'270 or 2'540 dpi, the resolution is directly related to output performance, ensuring that JetScreen! LT always operates within an optimal range and speed. As an option, some JetScreen! LT models are available with a resolution of up to 5'080 dpi.

## Inline Processing

As an option, the JetScreen! LT can be integrated into an automatic inline system, for example, with a loading magazine, developer and unloading magazine.

## Highest Imaging Quality

The optional X!Tend software pushes the physical limits of screen printing: X!Tend allows for the imaging of finer graphic elements compared to any standard imaging technique.





**Lüscher Technologies AG**

Industriestrasse 17  
4665 Oftringen  
Switzerland

Tel.: +41 62 767 76 76  
[contact@luescher.com](mailto:contact@luescher.com)  
[www.luescher.com](http://www.luescher.com)



A HELIOGRAPH HOLDING COMPANY